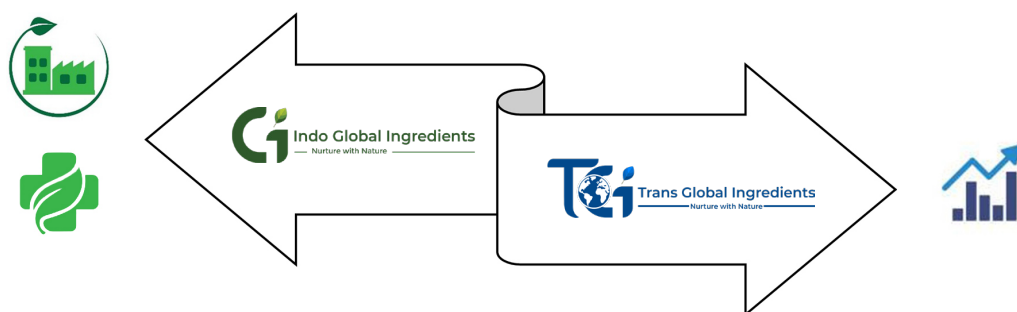




## The Group

**Trans Global Ingredients** - the international marketing arm of the group **derives its conviction from a decade of success of Indo Global Ingredients** – now the research and manufacturing arm of the group.

Created with the niche purpose of supplying and distribution of premium-quality natural ingredients, Trans Global Ingredients caters to the global quality standards as mandated by regional requirements.



As a group we specialize in R&D, Manufacturing and supply of quality natural ingredients to companies worldwide with business interest in the domains of pharmaceutical, nutraceutical, food & beverage, Cosmeceuticals and personal care.

## Our Mandate

- ▶ Science backed innovation
- ▶ Quality manufacturing
- ▶ Timely service and update
- ▶ Regard & respect the commitment to our clients

## Profound respects to

- ▶ Legacy obtained from Nature
- ▶ Wisdom from 75+ years of experience as professionals in the field of natural products
- ▶ Resilience and triumphs of 10+ years since the origin of the group
- ▶ Sustained engagement with our loyal clients, worldwide





## What We Do

Our state-of-the-art manufacturing ecosystem transforms nature's bounty into premium botanical extracts.



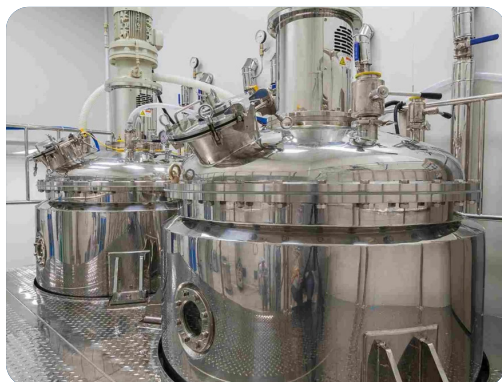
Raw Material Sourcing



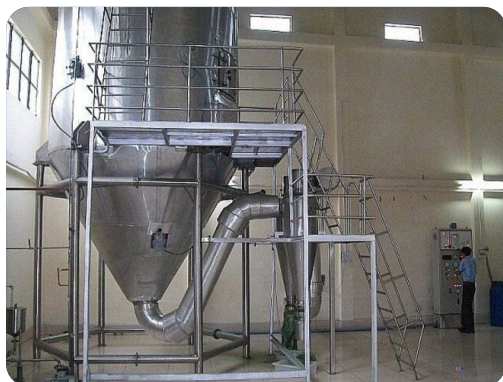
Pulverizing



Extraction



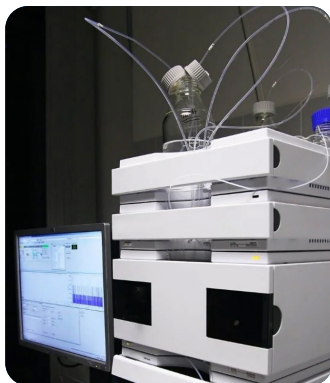
Enrichment



Drying



Finished Operations



Quality Control



Finished Goods Storage



## Ashwagandha Extract

- Biomarker** - Total Withanolides
- Standardization** - Upto 15% by HPLC - USP  
- Upto 15% by Gravimetry
- Benefits** - Adaptogen  
- Stress Management



## Boswellia Extract

- Biomarker** - Boswellia Acids  
- AKBBA
- Standardization** - Upto 85% by Titration  
- Upto 60% by HPLC
- Benefits** - Joint Health Support



## Bacopa Extract

- Biomarker** - Bacosides
- Standardization** - Upto 50% by HPLC - USP  
- Upto 50% by UV
- Benefits** - Cognitive Health Support



## Black Pepper Extract

- Biomarker** - Piperine
- Standardization** - Upto 95% by HPLC
- Benefits** - Thermogenic Management



## Garcinia Cambogia Extract

- Biomarker** - Hydroxy Citric Acid
- Standardization** - Upto 70% by HPLC
- Benefits** - Weight Management



## Green Coffee Bean Extract

- Biomarker** - Chlorogenic Acids
- Standardization** - Upto 50% by HPLC - USP
- Benefits** - Weight Management  
- Blood Sugar Support  
- Cardiovascular Support



## Gymnemma Extract

- Biomarker** - Gymnemic Acids
- Standardization** - Upto 75% by Gravimetry
- Benefits** - Blood Sugar Support



## Ginger Extract

- Biomarker** - Gingerols (Powder)  
- Gingerols (Oleoresin)
- Standardization** - Upto 10% by HPLC  
- Upto 30% by HPLC
- Benefits** - Joint Health  
- Pain Management  
- Digestive Health Support



## Marigold Extract

- Biomarker** - Free Lutein
- Standardization** - Upto 70% by HPLC (Powder)  
- Upto 20% by HPLC (Oil)
- Benefits** - Ocular Health Support



## Milk Thistle Extract

- Biomarker** - Silymarins  
- Silybins
- Standardization** - Upto 80% by UV  
- Upto 30% by HPLC
- Benefits** - Hepatoprotectant  
- Stress Management



## Turmeric Extract

- Biomarker** - Curcuminoids
- Standardization** - Upto 95% by HPLC  
- Upto 20% by HPLC (WS)
- Benefits** - Antioxidant  
- Joint Health Support



## White Kidney Bean Extract

- Biomarker** -  $\alpha$  - Amylase Inhibitor
- Standardization** - Upto 20,000 ALU by Enzymatic Analysis
- Benefits** - Weight Management  
- Blood Sugar Support

# Standardized Phyto Extracts



Name	Biomarker	Standardization	Benefits
<b>Fresh Amla Juice Powder</b>	Tannins	30% by Titration	► Antioxidant ► Immune support
<b>Andrographis Extract</b>	Andrographolides	Upto 20% by HPLC	► Hepatoprotectant ► Respiratory support ► Immune support
<b>Asparagus Extract</b>	Saponins	Upto 40% by Gravimetry	► Galactagogue ► Women's health support
<b>Bamboo shoot extract</b>	Silica	Upto 70% by Gravimetry	► Nutricosmetic
<b>Banaba Extract</b>	Corosolic acid	Upto 20% by HPLC	► Blood sugar support
<b>Berberine HCl</b>	Berberine HCl	98% by HPLC - USP	► Blood sugar support
<b>Bitter melon Extract</b>	Bitters	Upto 10% by Gravimetry	► Blood sugar support
<b>Centella Extract</b>	Triterpenes Asiaticosides	Upto 45% by HPLC Upto 10% by HPLC	► Memory support ► Skin health
<b>Coconut Water Powder</b>	Natural Potassium	Upto 4% by ICPOES/ Titration	► General wellbeing
<b>Cinnamon extract</b>	Polyphenols	Upto 20% by UV	► Blood sugar support
<b>Cissus Extract</b>	Ketosterones	Upto 40% by Gravimetry	► Bone and Joint support
<b>Coleus Extract</b>	Forskohlin	Upto 40% by HPLC	► Weight management
<b>Fenugreek Extract</b>	Saponins	Upto 60% by Gravimetry	► Women's health support
<b>Fenugreek Extract P</b>	Saponins Protodioscin	Upto 60% by Gravimetry NLT 10% by HPLC	► Men's health support
<b>Garcinia Mangostana Extract</b>	Mangosteen	Upto 60% by HPLC	► Oral care ► Wound healing
<b>Ginkgo biloba Extract</b>	Flavone glycosides	Upto 24% by HPLC	► Cognitive health support
<b>Guggul Extract</b>	E & Z Guggulsterones	Upto 2.5% by HPLC Upto 10% by UV	► Cardiovascular health
<b>Licorice Extract</b>	Glycyrrhizinic Acid	Upto 20% by HPLC NMT 3% by HPLC	► Immune support ► Digestive support



Name	Biomarker	Standardization	Benefits
Moringa Leaf Extract	Protein	20% by Nitrogen estimation	► Immune support
Mucuna Extract	L-Dopa	Upto 50% by HPLC	► Energy support ► Men's health support
Natural Caffeine	Caffeine	Upto 99% by HPLC	► Energy support
Saffron Extract	Crocin Saffranal	Upto 10% by UV Upto 0.5% by UV	► Stress management ► Sexual health support
Salacia Extract	Saponins	20% by Gravimetry	► Blood sugar support
Senna Extract	Sennoside	Upto 20% by UV	► Laxative
Tulsi Extract	Ursolic Acid Tanins	2.5% by HPLC 10 % by Titration	► Antistress

## New Range of Phyto Extracts

Product	Bio Marker	Standardization	Benefits
Beetroot Extract	Betaine HCl	98% to 100.5% by Titration USP	► Improve endurance ► Reduce fatigue
Black Cumin Seed oil	Thymoquinone	NLT 2% by GC	► Improves cognitive health ► Cardiovascular support ► Blood sugar support
Black Garlic Extract	Allyl cysteine	Upto 0.25% by HPLC	► Cardiovascular support ► Immunity support
Black Tea Extract	Polyphenols	Upto 10% by UV	► Antioxidant
Cranberry Extract	Proanthocyanindins	Upto 25% by UV	► Urinary heath support
Instant Black Tea Extract	Polyphenols	Upto 25% by UV	► Antioxidant ► CWS / HWS-Beverages
Instant Green Tea Extract	Polyphenols	Upto 40% by UV	► Antioxidant ► CWS / HWS-Beverages
Pistachio Extract	Melatonin	Upto 3% by HPLC	► Promotes quality sleep
Pomegranate Fruit Extract	Ellagic Acid Punicalagin	Upto 40% by HPLC Upto 25% by HPLC	► Manage MetS ► Antioxidant
Valerian Extract	Valerinic acid	Upto 0.8% by HPLC	► Helps promotes sleep
Vitex Agnus Castus Extract	Agnuside	Upto 3% by HPLC	► Women's health support

Product Name	Standardization	Benefits
5-HTP	Upto 98% by HPLC	<ul style="list-style-type: none"><li>▶ Helps promotes sleep</li><li>▶ Manage stress</li></ul>
Acetyl L Carnosine	NLT 98% by HPLC	<ul style="list-style-type: none"><li>▶ Help improve memory and thinking skills</li></ul>
Baicalin	Upto 80% by HPLC	<ul style="list-style-type: none"><li>▶ Stress management</li><li>▶ Joint health</li></ul>
Bakuchiol	NLT 90% by HPLC	<ul style="list-style-type: none"><li>▶ Antiaging topical nutrient</li></ul>
Betaine HCl	98% to 100.5% by Titration USP	<ul style="list-style-type: none"><li>▶ Improve endurance</li><li>▶ Reduce fatigue</li></ul>
Co Enzyme Q10	98% to 101% as per USP	<ul style="list-style-type: none"><li>▶ Cardiovascular support</li><li>▶ Antiaging</li></ul>
Dihydroxy Resveratrol	NLT 97% by HPLC	<ul style="list-style-type: none"><li>▶ Management of MetS</li></ul>
EGCG	NLT 98% by HPLC	<ul style="list-style-type: none"><li>▶ Antioxidant</li><li>▶ Joint health support</li></ul>
L Carnosine	NLT 98% by HPLC	<ul style="list-style-type: none"><li>▶ Neuro protective nutrient</li></ul>
L Glutathione	NLT 98% by HPLC	<ul style="list-style-type: none"><li>▶ Master antioxidant</li></ul>
L Theanine	NLT 98% by HPLC	<ul style="list-style-type: none"><li>▶ Improve memory and cognition</li><li>▶ Stress management</li></ul>
Oxyresveratrol	NLT 97% by HPLC	<ul style="list-style-type: none"><li>▶ Improves skintone</li><li>▶ Antioxidant (Topical)</li></ul>
Oxyresveratrol WS (BD Complex)	NLT 98% by HPLC	<ul style="list-style-type: none"><li>▶ Improves skintone</li><li>▶ Antioxidant (Topical)</li></ul>
Phosphatidyl serine	NLT 70% by HPLC	<ul style="list-style-type: none"><li>▶ Improve memory &amp; cognition</li><li>▶ Stress management</li></ul>
Quercetin Dihydrate	Upto 95% by HPLC	<ul style="list-style-type: none"><li>▶ Cardiovascular support</li></ul>
Rutin	Upto 95% by UV	<ul style="list-style-type: none"><li>▶ Microcirculation of blood</li></ul>
Squalane	Upto 98% by GC	<ul style="list-style-type: none"><li>▶ Protects skin barrier functions</li><li>▶ Promotes skin hydration</li></ul>
Squalene	Upto 99% by GC	<ul style="list-style-type: none"><li>▶ Protects skin barrier functions</li><li>▶ Promotes skin hydration</li></ul>
Zinc L Carnosine	NLT 98% by HPLC	<ul style="list-style-type: none"><li>▶ Support good gut health</li></ul>



# Our Cosmeceutical Range



Product	Biomarker	Standardization	Benefits
Bakuchiol	Bakuchiol	NLT 90% by HPLC	► Natural Retinol replacement
Black Cumin Seed oil	Thymoquinone	NLT 2% by GC	► Improves scalp health ► Promotes hair growth
Boswellia extract	Boswellic Acids	Upto 40% by HPLC	► Antiaging skin nutrient ► Soothes sensitive skin
Dihydroxy Resveratrol	Dihydroxy Resveratrol	NLT 97% by HPLC	► Manage hyperpigmentation ► Improves skintone
Fresh Amla Juice Powder	Tannins	Upto 30% by Titration	► Skin cell rejuvenation Wound healing
Natural Caffeine	Caffeine	Upto 99% by HPLC	► Improve microcirculation of blood
Oxyresveratrol	Oxyresveratrol	NLT 97% by HPLC	► Improves skintone ► Antioxidant
Oxyresveratrol WS (BD Complex)	Oxyresveratrol Complex	NLT 98% by HPLC	► Improves skintone ► Antioxidant
Pterocarpus Marsupium Extract	Pterostilbene	Upto 90% by HPLC	► Improves skin tone ► Wound healing
Quercetin	Quercetin	Upto 95% by HPLC	► UV Protection
Quercus Infectoria Extract	Tannins	Upto 80% by Titration	► Women's hygiene health
Rutin	Rutin	Upto 95% by UV	► Antiaging skin nutrient
Squalane	Squalane	Upto 98% by GC	► Skin barrier protection ► Promotes skin hydration
Squalene	Squalene	Upto 99% by GC	► Skin barrier protection ► Promotes skin hydration
White Curcumin	Tetrahydrocurcumin	NLT 95% by HPLC	► Manage hyperpigmentation

# Probiotics



Product	Potency
Bacillus clausii	10 – 200 Billion Spores/g
Bacillus coagulans	10 – 200 Billion Spores/g
Bacillus subtilis	10 – 200 Billion Spores/g
Lactobacillus acidophilus	10 – 200 Billion CFU/g
Lactobacillus plantarum	10 – 200 Billion CFU/g
Lactobacillus rhamnosus	10 – 200 Billion CFU/g
Saccharomyces boulardii	20 Billion CFU/g

# Enzymes

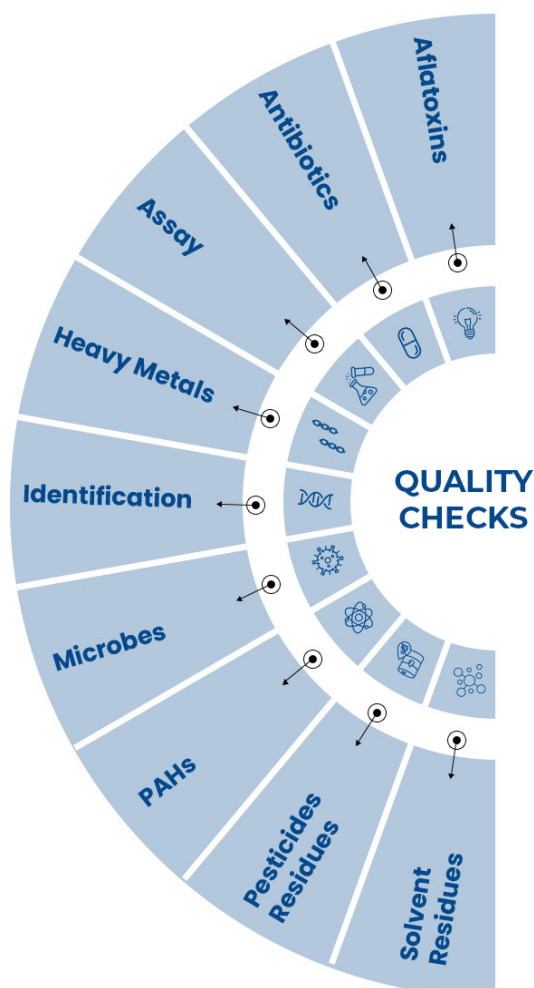
Product	Activity
Acid Cellulase	10,000 CU/g to 55,000 CU/g
Acid Lactase	10,000 ALU/g to 1,00,000 ALU/g
Acid protease	10,000 HUT/g to 5,00,000 HUT/g
Alkaline protease	10,000 SAP/g to 5,00,000 SAP/g
Bromelain	600 GDU/g to 2,400 GDU/g
Fungal Alpha amylase	10,000 DU/g to 1,50,000 DU/g
Lipase	10,000 FIP/g to 1,50,000 FIP/g
Neutral Protease	10,000 PC/g to 2,00,000 PC/g
Papain	100 TU/mg to 1,000 TU/mg

# Mineral Range

Product	Standardization
Calcium Citrate Malate	NLT 23% Calcium
Chromium Picolinate	NLT 12% Chromium
L-Selenomethionine Pure	Upto 98% as LSM ; 40% Selenium
L-Selenomethionine	Upto 5000 ppm Selenium
Methylselenocysteine Pure	Upto 98% as MeSC ; 43% Selenium
Methylselenocysteine	Upto 5000 ppm Selenium
Selenium yeast	Upto 2000 ppm Selenium
Zinc Monomethionine	NLT 20% Zinc
Zinc Picolinate	NLT 20% Zinc
Zinc yeast	Upto 20,000 ppm Zinc

## Quality

Delivering trust through rigorous and validated quality standards.



Our products are evaluated for quality compliance by both In-house and approved external labs using state-of-art Analytical equipments such as HPLC, GC-MS, LC-MS, ICP-OES/AAS, IR /UV spectrometers and more.

Raw materials, In-process and Finished products are analyzed as per preset check points or specifications. Every batch of final product being dispatched are checked for compliance to several physio-chemical parameters, Assay or Purity, Limits of contaminants such as Heavy metals, Mycotoxins, PAH, ETO, Microbials etc., as per the client requirements.

We take pride in the fact that during a time of increasing regulatory compliance, our robust quality checks helps our clientele who are eager to find a trustworthy source for natural ingredients.



## Our Global Network



Today, we are an organization with global network of clients enabled with a strong conviction in our values of integrity and commitment to improve the health and well-being of humanity.

This is reciprocated by many of our loyal clients.



Corporate Office:

#1, 1(A) & 2, Dalmia Estate, Site 7 & 8,  
Chikkabidrakallu, Nagasandra Post,  
Bangalore - 560 073,  
Karnataka, India



Works:

Plot No. 182, KIADB, Sira  
Industrial Area, Sira - 571 137.  
Karnataka - India



+91-97411 65123 / +91-98458 20838 / +91-98802 28161



[info@indoglobal.co.in](mailto:info@indoglobal.co.in)



[www.transglobalingredients.com](http://www.transglobalingredients.com) / [www.indoglobal.co.in](http://www.indoglobal.co.in)

